



EARLY LEARNING RESOURCE CENTER

OFFICE OF CHILD DEVELOPMENT AND EARLY LEARNING

350 Main Street
 Latrobe, PA 15650
 Phone: 724-836-4580
 Toll-Free: 1-800-548-2741
 Phones Answered:
 Monday-Friday 8:00 AM-4:00PM
 Fax: 724-836-5415
 Email: ELRCRegion4@PA.GOV
 Website: www.elrc4kids.com

Office Open for Walk-ins:
 Monday - Friday 9:00 AM - 3:00 PM



Spring 2025

INSIDE THIS ISSUE:

UPDATED INCOME	2
CASE MANAGERS	2
PROVIDER NAME AND NUMBERS	3
GENERAL INFORMATION	4-5
GREENE COUNTY INFORMATION	6-7
WESMORELAND INFORMATION	8-11
WASHINGTON INFORMATION	12
FEYETTE COUNTY	13-14
SOCIAL AND EMOTIONAL	15



On Sunday, March 2, 2025 we celebrate Dr. Seuss with Read Across America.



Kindergarten Registration is coming up! Please check with your local district to see their dates and times.





Daylight Savings Time is March 9, 2025 Don't forget to Spring forward and enjoy the extra daylight! Also, now is a great time to change the batteries in your smoke detectors!



FEDERAL POVERTY INCOME GUIDELINES

Effective May 6, 2024 the Federal Poverty Income Guidelines change.

Please find the updated guidelines below.

Family Size	Gross Annual Income
2	\$40,880
3	\$51,640
4	\$62,400
5	\$73,160
6	\$83,920
7	\$94,680

Please call the office for income guidelines for any family size that is greater than seven.

ELRC Caseloads & Case Managers

Levi	A-C & V	ext.111
Nathan	D-G & W	ext. 113
Kelly	H-L & Infant/Toddler Program	ext. 112
Hannah	M-P & X-Z	ext. 141
Kathy	Q-U	ext. 127



REMINDER:

We cannot leave a message if your voicemail is full or your mailbox has not been set-up.

Provider Names and Information



<u>ELRC STAFF</u>	<u>TITLE</u>	<u>EXT.</u>
Jen Berardinelli	Provider Specialist (CCW Provider Agreements)	115
Donna Stash	Quality Coach	139
Heather Chicotella	Quality Coach	140
Melissa DePaul	Quality Coach	143
Heather Amick	TA/PD Coordinator Quality Coach	142
Diane Hendrick	Provider Quality Specialist (Designator)	130
Lisa Spoonhoward	Provider Quality and Supports Director	126
Bobbie Shultz	Family Child Care Quality Support Specialist	129
Morgan Frank	Resource and Referral Information Specialist	144



Over the moon to meet baby!

FREE COMMUNITY BABY SHOWERS

Events are designed for expecting parents and/or families with a newborn (0-3 months)



Wilkinsburg - March 4

Baldwin - March 11

Latrobe - March 18

Washington - March 26

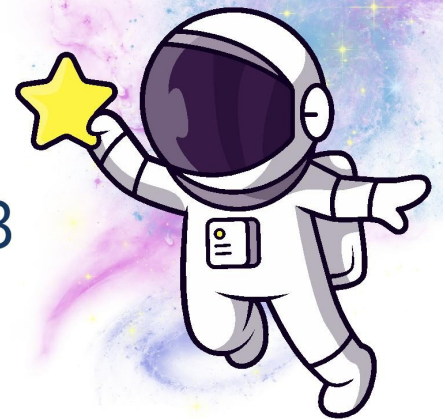
Penn Hills - April 1

Uniontown - April 8

Northside - April 15

Greensburg - April 23

Braddock - May 13



Registration required
and spaces are limited.

Beverly's
PGH

FREE TAX PREPARATION

Get your maximum refund and Earned Income Tax Credit (EITC).

(TAX SITE LOCATIONS LISTED ON REVERSE)



IRS-certified volunteers are ready to help households earning up to \$65,000 per year.

The Earned Income Tax Credit can help you to pay down bills, fund a child's education or build savings.

There is no charge, no matter the size of your refund.

SCHEDULE YOUR APPOINTMENT!




SCHEDULE ONLINE AT
pa211.org/vita


CALL 211 or
888-856-2773

IN-PERSON TAX HELP

Volunteers at tax sites throughout the region can help households earning up to \$65,000 per year.

Schedule an appointment at
pa211.org/vita

FILE YOUR OWN

You can file your own federal and state taxes for free online at MyFreeTaxes.com.
Phone support available from United Way.
Free for income levels \$84,000 and below.

Free tax sites located throughout the region to serve Allegheny, Fayette, Greene, Washington and Westmoreland counties. Make an appointment at a location near you.



FREE TAX PREP

211

VITA Volunteer Income Tax Assistance

Attention Greene County

COMMUNITY TODDLER EASTER EGG HUNT

RSVP BY TEXT
724-710-5476

CRAFTS, GAMES,
SNACKS

THURSDAY, APRIL 10, 2025

TIME 10AM-12PM

PLEASE NOTE OUR EGG HUNT WILL BE COMPLETED ONLY ONCE DURING THIS EVENT. TIME TO BE DETERMINED. LATE ARRIVAL COULD MEAN THE EGG HUNT IS COMPLETE AND WE HAVE MOVED ON TO OTHER ACTIVITIES.

GREENE COUNTY FAIRGROUNDS

ALL GREENE COUNTY NON SCHOOL AGE KIDS INVITED

FREE PICTURES WITH THE EASTER BUNNY

**HOSTED BY: GREENE COUNTY EARLY
INTERVENTION LICC**

SPONSORED BY:



Attention Greene County

Spring Children's Programming at the Eva K Bowlby Public Library!

Classes start the week of March 3 and will run for 10 weeks.

Recommended Birth - 17 Months: Baby Lap Sit

Tuesdays, 9:30 AM: Introducing the youngest library visitors to stories, songs, and play.



Recommended 18-35 Months: Toddler Share

Tuesdays, 10:30 AM OR Fridays, 10:30 AM: Stories, songs and simple crafts!

Recommended 3-5 Years: Preschool Storytime

Mondays, 10:30 AM OR Tuesdays, 1:30 PM: Stories, songs and (slightly more complex) crafts!

Recommended 2-6 Years: Stories Under the Moon

Wednesdays 6:00 PM: an evening story song and craft session for all ages

Rotating Thursday Programs (also recommended 2-6):

- Yoga and Movement Storytime, First Thursdays (March 6, April 3, May 1) at 10:30: we'll use stories to dive into mindful movements that encourage calm and focus
- Sensory-Friendly Storytime, Second Thursdays (March 13, April 10, May 8) at 10:30: Not sure how your neurodivergent child will handle the storytime setting? Crowds and noise too disturbing? This storytime is designed to work with your child's special needs, providing both extra structure and extra flexibility.
- Dance Party, Third Thursdays (March 20, April 17) at 10:30: Follow along to traditional dances or go wild with fun props—you will leave this program invigorated or ready for a nap!
- Messy Art, Fourth Thursdays (March 27, April 24) at 10:30: dress appropriately to get into art hands-first at this no-holds-barred creation session



And for Older Kids: Build it, Make it, Do it! (ages 6-12)

Thursdays at 4:00 PM: A STEAM Program for crafters, mad scientists, and other Makers.

Sign up for storytimes:



Or call 724-627-9776

Bowlby Public Library
311 North West St.
Waynesburg, PA 15370

Sign up for Build It, Make It, Do It!



Attention Westmoreland County



WESTMORELAND SALE FOR KIDS

**THANK YOU SO MUCH FOR THE
CONTINUED SUPPORT**

**VOTED Best of the Best Childrens Clothing Store
of Westmoreland by TribLIVE**



Westmoreland Sale for Kids

April 25, 12 pm - 8 pm - April 26, 9 am - 3 pm

April 27, 10 am - 2 pm

New and Gently Used, Clothing - Toys - Nursery Items

Westmoreland Fairgrounds

www.saleforkids.com

Family Support Resource Line

Supporting Your Family's Mental Wellness



724-790-4474

Monday - Friday 8 am - 4 pm

Free to all families looking for mental health answers and resources.

CRISIS HOTLINE ANSWERS 24/7

724-437-1003



www.crcsi.org

Attention Westmoreland County



4th Annual **SPRING** Spectacular Westmoreland County Community Festival



**10 K Egg Hunt, Golden Ticket Prizes, Bunny Photo Op,
Andy the Ambulance, Food Trucks, Face Painting,
Balloon Twisting, Resource Tables, and lots more!**



April 5, 2025

11 AM - 2 PM

Westmoreland County Fairgrounds
Pre-registration Required
Slots are Limited



Registration Information Coming Soon

**PLEASE NOTE: If you need to change or cancel your
reservation please contact Lisa at
egoldberg@mhaswpa.org**



**Sponsored By: Ray of Hope in partnership
with Westmoreland County DHS and BH/DS**



Attention Westmoreland County



**Westmoreland
Community
Action**

**FAMILY
SUPPORT
GROUP**

with support by

 **OverdoseLifeline**

Enroll Now



Does Someone You Love Struggle with Drug or Alcohol Use?



Join us for a free family support program.

This Family Support Group is for the family members and friends concerned about their loved ones who live with a substance use disorder. This program is based on the Community Reinforcement and Family Training (CRAFT) model. The CRAFT model is a highly effective, evidence-based, motivational program that impacts families in multiple areas of their lives.

1 REDUCE

your loved one's harmful
substance use

2 ENGAGE

your loved one into
treatment

3 IMPROVE

you and your family
functioning

TOPICS INCLUDE


- : Family dynamics: identifying triggers & motivators
- : Developing positive communication techniques
- : Helping the loved one enter treatment services & engage in recovery
- : Effective methods and available resources—empowers you to influence change & improves your quality of life

Groups & Locations:
Tuesdays 6:00-7:30pm
316 Donohoe Rd.
Greensburg, PA 15601

For more information contact:

Jamie Leventry
Program Specialist

 724-834-1260 ext. 1031

 724-433-1347

 jleventry@westmorelandca.org



Attention Washington County



**Washington County
Behavioral Health &
Developmental Services**

FREE TRAINING *Bringing Autism Resources Together*

**Presented by Ryan Cramer of ASERT:
Autism Services, Education, Resources,
and Training Collaborative**



MARCH 7, 2025
9:00AM - 4:30PM



138 East Maiden Street
Washington, PA 15301

Curriculum covers:

- ✔ Diagnostic Criteria including symptomology
- ✔ Conceptualization of Autism
- ✔ Meeting the behavioral health needs of Autistic individuals
- ✔ Available Supports & Resources

**Registration begins at 8:30am
with lunch provided.**

Click Below Link:

<https://forms.office.com/g/cjgzCVfuzc>

Attention Fayette County



**Head Start/
Early Head Start
of
Fayette County**



Division of the Private Industry Council of Westmoreland/Fayette, Inc.



Don't miss out, **Apply Now for
2025-2026 school year!!**

**High quality early educational program
at **NO** cost to you!**



Registration Day!

Open to ALL Fayette County Families!



When: Thursday, March 13, 2025

Time: 9:00AM to 4:30PM

Where: All Head Start sites

Who can sign-up: *Pregnant Women and families with children ages birth to 5*

**Get a HEAD Start:
Scan code to complete
Pre-Application!**



Documents needed to complete application:

- Child's Birth Certificate
- Proof of Family Income*
- Pay stubs, W2s, 1040 tax form, determination letters, SNAP card, etc.
- Child's shot record

*We will not be able to process the application without ALL of the above items.

FOLLOW US!



Call 724-430-4818 for details & directions.

Come meet our teachers and other staff, tour the classrooms, playgrounds and buses, ask questions fill out an application and MORE!

Attention Fayette County

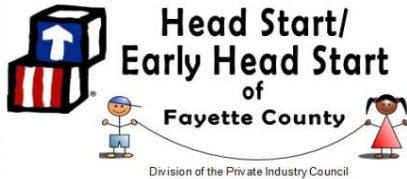
Dr. Seuss

SAVE THE DATE

crunch,
zingle,
groove
at
munch, mingle, move!

Thursday May 22nd, 2025
10AM-2PM
Fayette County Fairgrounds

Limited Transportation
Lunch Provided
More Details to Come!



Social and Emotional Learning: A Parent's Guide

Social and Emotional development is how children learn to understand and manage their emotions. Parents can help children foster these skills by modeling behaviors they want their children to show, being responsive to their children's emotions to develop trust, encouraging kids to try new things, and using stories and games to teach children how to share, take turns, and learn about emotions.



Please visit the link below for several tips and resources

[Social Emotional Development: A Parent's Guide to Raising a Kind Child](#)

